



High Availability & Disaster Recovery with Instrument Manager

Safeguard your lab with always-on continuity



Doc ID: DATAINN-728876664-844 | V1.0

Reminders

- Phone lines will be muted
- Chat questions into me at any time
- Must have an 83% participation in order to receive PACE credits
- PACE certificates will be emailed to you Wednesday

Upcoming Webinars & Virtual Events

COVID-19 Rapid Response Platform: End-to-end integration for COVID-19 instruments, results, and the LIS

Oct. 28, 2020

10:00 AM PT /1:00 PM ET

Virtual Thought Leadership Event

The Lab's "New Normal": Thought Leadership to Navigate and Embrace Industry Change

Nov. 12, 2020

10:00 AM PT /2:00 PM ET



COVID-19 News Summary

Current trending topics

COVID-19 News

Current trending topics



Seasonal Preparation



Laboratory Testing Volumes and Supplies



Individual vs Multiplex testing

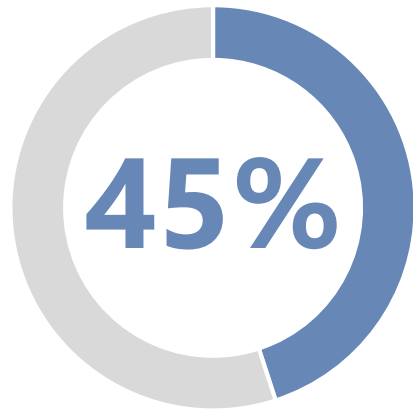


Bio Safety Levels

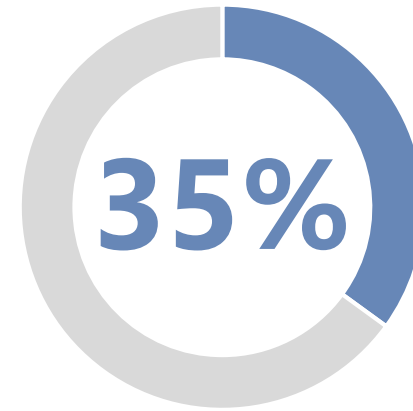


Shipping of specimens

Unplanned outages happen



caused by hardware failure



caused by loss of power



Potential cost of an unplanned outage

\$926 to \$17K+ per minute

What if you could reduce risk?

- Better assure IM system availability
- Prevent impact to patient care
- Protect lab operations and productivity



Instrument Manager forms the foundation of lab operations

- Manages connectivity from instruments to LIS
- Supports clinical operations to analytics



What is High Availability?

High Availability is a characteristic of a system which aims to ensure an agreed level of operational performance, usually uptime, for a higher than normal period. (source: Wikipedia)

High Availability with Instrument Manager utilizes Intersystems Mirroring Technology with automatic failover to enable.

Infrastructure you can count on for systems issues small and large



High Availability

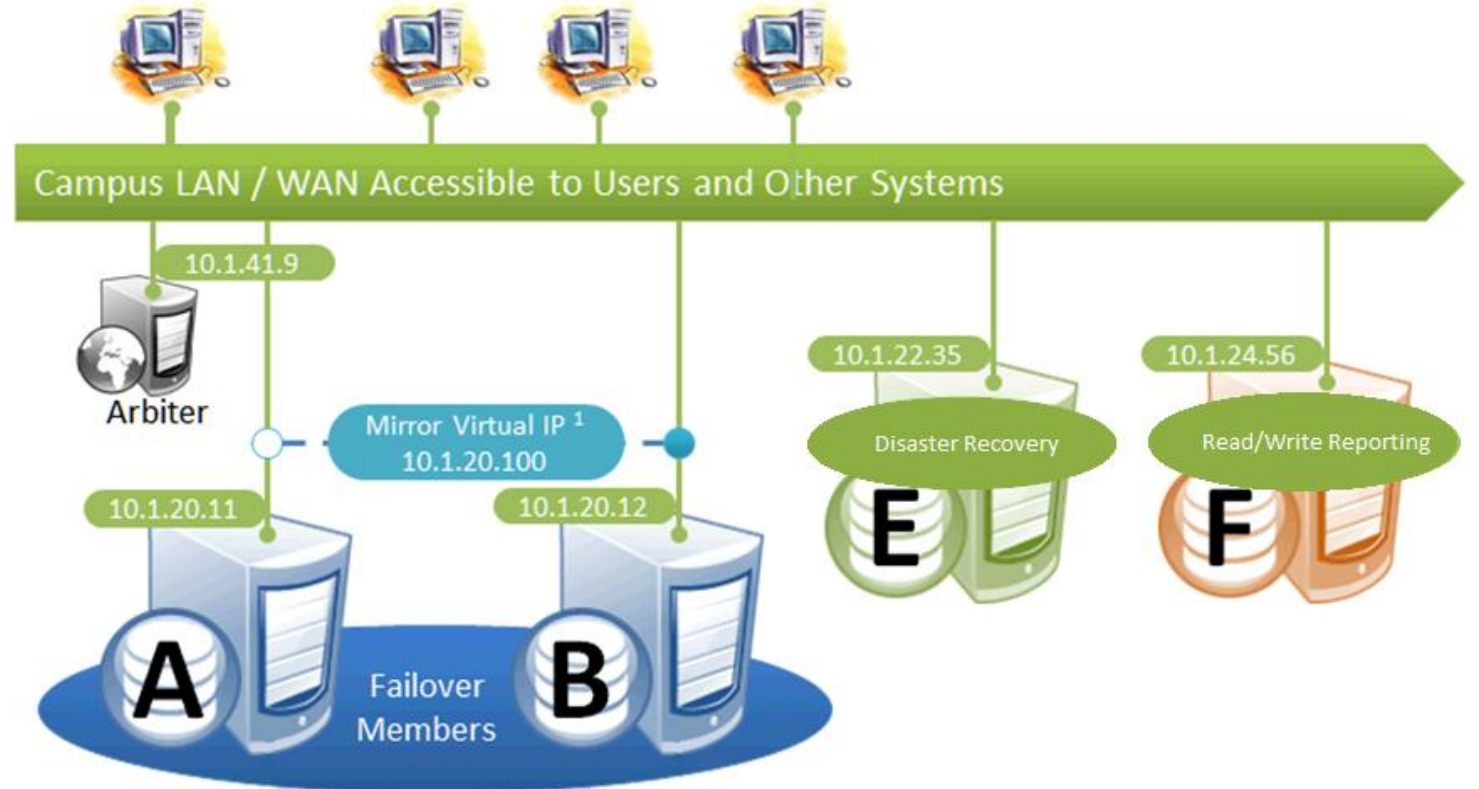
- Approach 99% uptime
- On-site failover
- Triggered by hardware issues or system failures to maintain operations

Disaster Recovery

- Activated for major site issues, disasters
- Off-site activation and failover
- Enables recovery after site damage



Mirroring Network Topology



Differences Between Mirror Members

Definitions

A Mirror Member can have different roles

- Failover
- Read-Write Reporting (Report Server)
- Disaster Recovery
- Arbiter

A Mirror Member can be in different states

- Primary
- Backup
- Connected

Setup

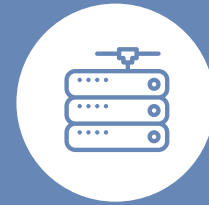
Pre-flight requirements



Installation of Instrument Manager and the Arbiter have been run on all systems



Locale settings



VIP and Hostname retrieved from IT



Network topology has been ironed out

Setup



Arbiter System



Virtual Machine use



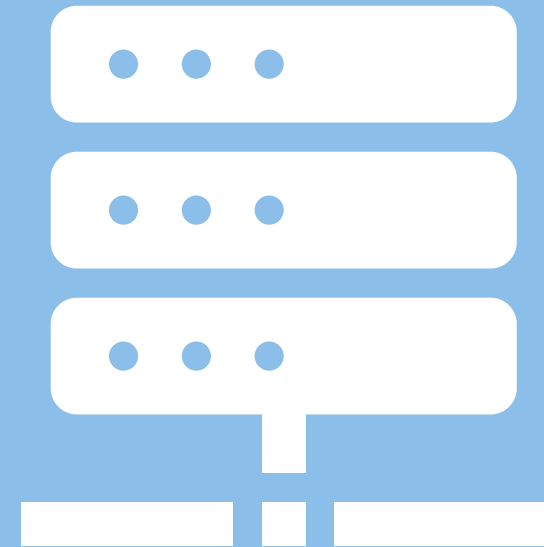
Use the Manage Mirror Members screen to add the primary



Other Mirror Members can be added from the Manage Mirror Member screen

Virtual IP and Hostname

- What is a Virtual IP?
- How is it used?
- How is the Virtual IP and Hostname used with the other devices on the network?
- How is the Virtual IP and Hostname used with End User Software (aka Thin Clients)?
- What happens to End User Software (aka Thin Clients) when the acting primary goes offline and another Failover member takes over?



Software Security Key Process Changes



Hardware Security Keys are not used in HA or DR environment



Utility needs to be run on the Failover systems and the Disaster Recovery system

Monitoring



Status Display



Caché Management Portal:

System Operation -> Mirror Monitor

Unplanned Failover

During an unplanned Failover

Scenario includes two Failover systems

- Acting primary system goes down
- Any device / end user software (thin client) that is attached to the primary loses the network connection
- Arbiter sees that the heartbeat to that system has gone away
- Arbiter tells the other failover system to become the primary
- OS is informed to start responding to the Virtual IP address
- Connections with Autostart enabled are started up
- Notifier service is started

Failing Over Gracefully



Graceful Transition for
Applying
Updates/Maintenance

Upcoming Webinars & Virtual Events

Virtual User Group
Lab Intelligence
Oct. 6, 2020
11:00 AM PT /2:00 PM ET

Virtual Thought Leadership Event
The Lab's "New Normal": Thought Leadership to Navigate and Embrace
Industry Change
Nov. 12, 2020
10:00 AM PT /2:00 PM ET