



Laboratory Intelligence

Data Innovations Laboratory Intelligence (“Lab Intel”), is a business intelligence solution focused on the clinical laboratory environment. It is designed to provide a snapshot of laboratory operations at a glance through customizable dashboards. By providing easy access to critical analytics and drill-down capability, laboratory intelligence helps lab management focus on key operational issues. This functionality is a new application available in Instrument Manager (“IM”) v8.13, which was released in November 2013.

The Laboratory Intelligence feature provides embedded “real-time” data you can use to make data-driven decisions in your laboratory. Laboratory Intelligence displays Key Performance Indicators (KPIs) through pivot tables in interactive dashboards. A major strength of Laboratory Intelligence lies in its ability to provide real-time transactional data without the requirement of warehousing it. Dashboards provide leading indicators to monitor service levels and detect variances.

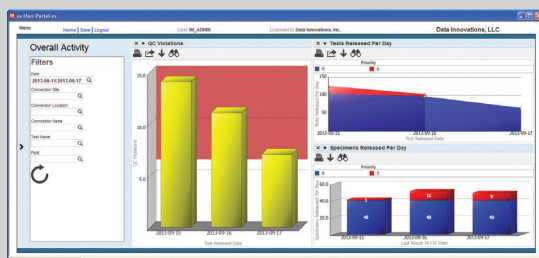
With the information available in this solution, you can:

- Make changes to improve processes, staffing levels, and track equipment usage
- Have instant access to real-time and actionable information
- Measure and monitor performance for early detection of exceptions
- Drill down to identify root-causes and troubleshoot quality issues

This easily customizable tool allows you to access operational performance metrics and helps you to evaluate overall workflow efficiency. This enables your laboratory to quickly identify any issues, drive consistency and increase your operating performance.

Several pre-configured KPIs indicate:

- Turnaround time
- Percent of auto-verification
- Quality indicators
- Volume



Customizable dashboards to easily monitor KPIs providing a pulse on lab operations at a glance

Predefined Key Performance Indicators

4 Metric Categories and 15 Predefined KPI's Included

		Metrics			
		TAT	Autoverify	Quality	Volume
KPIs	Specimens Released Per Day				●
	Test Released Per Day	●			●
	Specimen Completion Status	●	●	●	●
	Specimen By Priority	●		●	●
	First Time Pass Rate	●	●	●	
	QC Violations	●		●	
	Specimen Quality Indicators	●		●	
	Autoverification (Speedometer)	●	●		
	Autoverification (7 day bar chart)	●	●		
	TAT Chemistry for Routine	●			
	TAT Chemistry for STAT	●			
	TAT Hematology for STAT	●			
	TAT Hematology for Routine	●			
	TAT Overall	●			
	Connection Status			●	